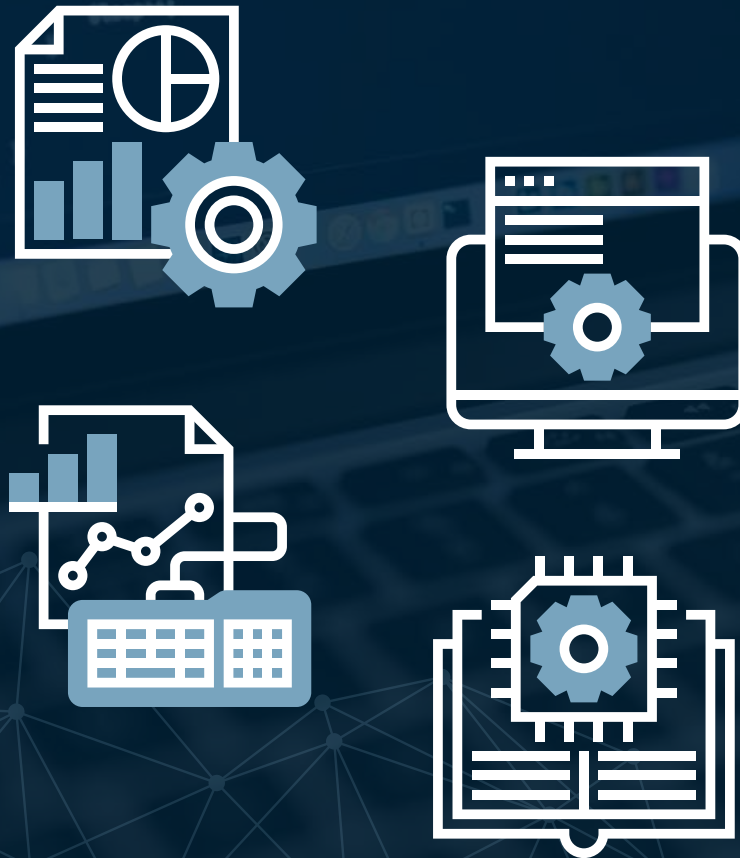


ENHANCING ITSM





ENHANCING ITSM WITH PRECISE ASSET DATA

In today's complex IT environments, the effectiveness of your IT Service Management (ITSM) processes is crucial for operational efficiency. BiitOps elevates your ITSM capabilities by providing accurate, comprehensive IT asset data, significantly improving your service delivery. But why is this so important?

BiitOps seamlessly integrates with leading ITSM solutions, enhancing your Configuration Management Database (CMDB) with precise asset information. This integration ensures your CMDB stays current, eliminating time wasted on outdated information. From servers and workstations to installed software and cloud resources, BiitOps provides extensive insights into your IT landscape. As assets change, BiitOps automatically updates your CMDB, ensuring it always reflects your current IT environment. Why does this matter? Because outdated or incorrect CMDB data can lead to misguided decisions, inefficient resource allocation, and potential security risks, all of which can significantly impact your business operations and bottom line.

With BiitOps' rich asset data feeding your ITSM, incident and problem management processes become more efficient and effective. Support teams can quickly access detailed configuration information, leading to faster resolution times. By correlating incidents with specific asset configurations or changes, you can identify trends and engage in proactive problem management. Detailed historical data allows for more accurate root cause analysis, helping prevent recurring issues and improving overall service quality. Why is this level of insight crucial? In today's fast-paced IT environments, downtime can significantly impact business operations, customer satisfaction, and ultimately, revenue.

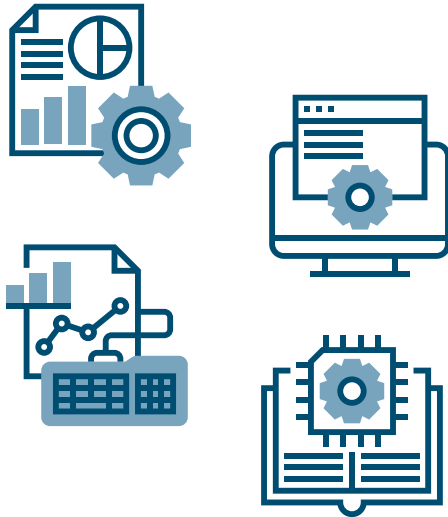
BiitOps' integration capabilities enhance various ITSM solutions, with our TOPdesk collaboration exemplifying how we streamline ITSM processes. These integrations significantly improve efficiency and data accuracy in IT asset management. Our turnkey asset management solution minimizes setup time and maximizes value. BiitOps automatically populates the ITSM platform with comprehensive asset information, ensuring consistency and eliminating manual data entry errors. This automation is crucial in fast-paced IT environments where manual processes often can't keep up.

A key feature is the automatic assignment of devices to users based on actual usage data. This ensures your ITSM system always reflects the current state of your IT environment, improving support ticket accuracy and preventing misrouted requests. BiitOps also establishes relationships between IT assets and installed software packages. This holistic view enables more effective incident management and change planning, allowing you to quickly identify affected assets and users when addressing updates or vulnerabilities.

Phone: +45 7199 2645
sales@biitops.com
www.biitops.com



BIITOPS EMPOWERS YOUR ITSM WITH VALUABLE INSIGHTS



As BiitOps continuously updates asset information, your ITSM's CMDB remains a reliable, up-to-date source of truth for your entire IT infrastructure. This ongoing accuracy is vital for informed decision-making about resource allocation, compliance, and strategic IT investments. While we've used TOPdesk as an example, BiitOps integrates with various ITSM solutions, always aiming to transform your ITSM from a basic operational tool into a strategic asset for your organization.

By providing a comprehensive view of your deployed assets, BiitOps empowers your ITSM with valuable insights for asset management. This clear overview enables informed decisions about resource allocation and potential cost savings. Additionally, maintaining accurate records of installed software simplifies audit processes and supports compliance efforts. The trend data provided by BiitOps informs capacity planning and budget allocation for future IT investments, aligning your IT strategy with business needs. Why does this matter? Because effective asset management is key to optimizing IT costs, ensuring compliance, and making strategic decisions that support your organization's growth and competitiveness.

In essence, BiitOps provides a reliable source of truth that elevates key aspects of your IT service delivery. By ensuring your ITSM processes are based on accurate and comprehensive asset information, BiitOps enables you to deliver more efficient and reliable IT services. In an era where IT service quality directly impacts business performance, having precise and comprehensive asset data driving your ITSM is crucial. With BiitOps, you're optimizing your entire IT operation, driving efficiency, reducing costs, and ultimately supporting better business outcomes. Why choose BiitOps? Because it transforms your ITSM from an operational function into a strategic business driver, giving you the insights and control you need to excel in today's technology-driven business landscape.