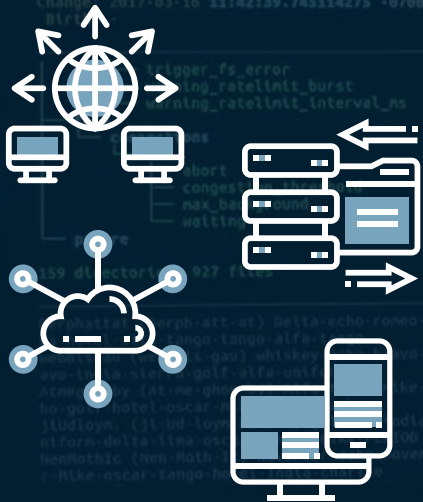




BUSINESS INTELLIGENCE
FOR IT OPERATIONS

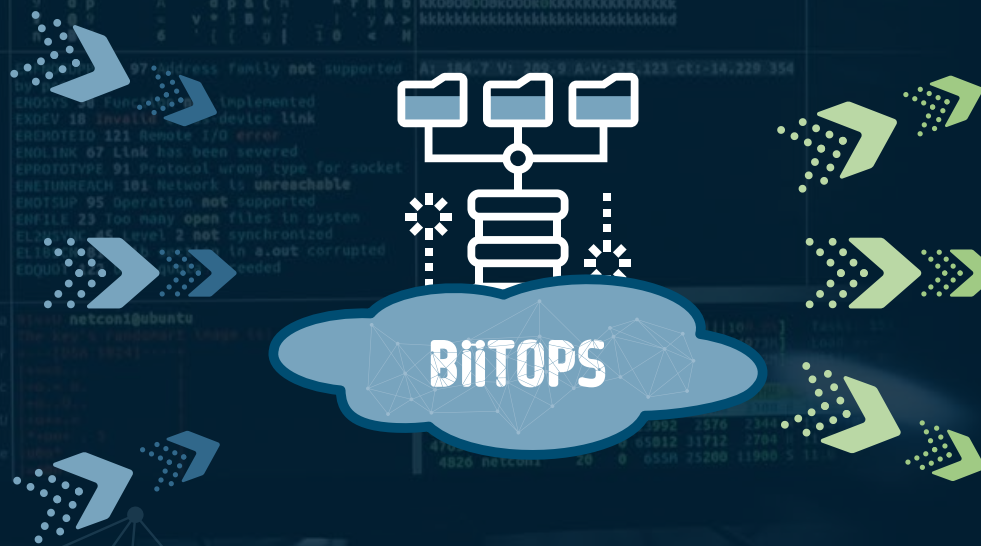
REVOLUTIONIZING IT ASSET MANAGEMENT

IT ASSETS



- Servers (physical and virtual)
- Clients (workstations, laptops, etc.)
- Cloud services
- Operating systems
- Installed software
- Hardware components
- License information

BIITOPS DATALAKE



BIITOPS

- Single point of truth for IT asset data
- Centralized, encrypted data storage
- Continuous data collection via agents
- Dual timestamp at property level
- Automatic delta-based data storage
- Scalable architecture
- Secure, customer-controlled access
- Historical data retention
- Automatic updates and maintenance

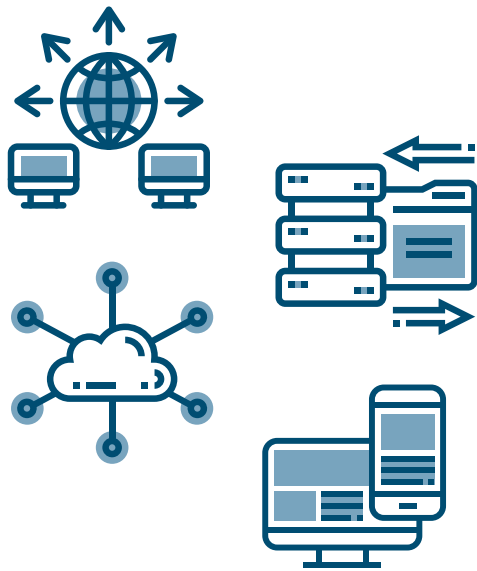
DATA UTILIZATION



- Advanced Microsoft PowerBI visualizations and analytics
- Reusable Microsoft Excel templates with flexible API integration
- Third-party integrations (e.g., ITSM)
- PowerShell and automations
- Dynamic dashboards and reports
- Predictive analytics and trend analysis
- Compliance and audit reporting



REVOLUTIONIZING IT ASSET MANAGEMENT



At the core of BiitOps lies our innovative DataEngine, transforming how businesses handle their IT assets. This powerful solution continuously collects and processes data from servers, clients, cloud services, and software, providing an unprecedented level of insight into your IT landscape.

The BiitOps Data Lake serves as a central hub for all your IT asset information. By consolidating data from various sources, it eliminates information silos and offers a 360-degree view of your IT environment. Why is this crucial? In today's complex IT ecosystems, fragmented data leads to inefficiencies, increased costs, and security risks. The BiitOps Data Lake turns your asset data into a strategic advantage.

Security is paramount in the BiitOps solution. All data is encrypted at the source and remains encrypted during transmission and storage. Our unique architecture ensures that sensitive information never leaves your control. The only outgoing connection is established from your BiitOps instance to our central services, solely for necessary updates and license management. This connection is always initiated by you, never by individual agents or BiitOps, giving you full control over data flow. In an era of increasing cyber threats, this level of security is not just desirable – it's essential.

Data quality sets BiitOps apart. Our dual timestamp technology tracks both collection and verification times for each data point at the property level. This unparalleled precision in asset tracking enables detailed historical analyses and ensures you're always working with the most accurate, up-to-date information. In regulatory environments and for critical decision-making, this level of data integrity is invaluable.

Ease of use is a cornerstone of BiitOps. Despite its powerful capabilities, the system is designed for intuitive operation. The user-friendly interface and automated processes mean you can start deriving value from day one, without extensive training or IT overhead. This rapid time-to-value is crucial in today's fast-paced business environment.

With BiitOps as your foundation, you can optimize IT spending through precise asset tracking and license management, strengthen your security posture with real-time insights, streamline compliance processes, improve decision-making, and free up IT resources. BiitOps isn't just a tool – it's a strategic asset that provides the insight and control you need to navigate an increasingly complex digital landscape. Let BiitOps be your partner in building a more efficient, secure, and value-driven IT infrastructure.

Phone: +45 7199 2645
sales@biitops.com
www.biitops.com